



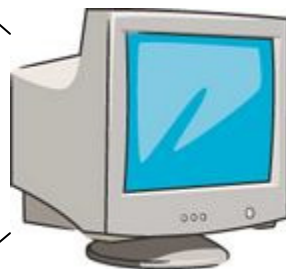
TOTAL number of records containing sensitive personal information involved in security breaches in the U.S. since January 2005.

251,164,141 as of **01/21/09**

Your Information is Irretrievably Out There...

Meet The Data Based YOU!

- Utility Companies
- Insurance Companies
- Credit Card Records
- Medical Records
- Real Estate Records
- Motor Vehicle Records
- School Records
- Military Records
- Social Security Records
- Banking Records
- Employment Records
- Postal Records
- Purchasing Records
- Tax Records
- Leasing Records
- Licensing Records



Once the credit systems accept bad data it can be next to impossible to clear.
USAToday June 5, 2007

Medical identity theft can impair your health and finances, and detecting it isn't easy... remedying the damages can be difficult.
Wall Street Journal
Oct 11, 2007